



Annual Meeting & Volunteer Celebration April 6, 2013 AGENDA

- 1:00 p.m. Tours, coffee and treats
- 1:30 p.m. Welcome
Dirk Kershner, Board Chair
- Invocation
Rev. Paul Nielsen
- History and Founder's Recognition
Kevin Joseph
- Vision and Mission of 2nd Floor
Betty Palmer
- Celebration of Volunteers
Sheila Bacon and Betty Palmer
- Celebration of Board Members
Dirk Kershner and Betty Palmer
- Community Support Awards
Dirk Kershner and Betty Palmer
- 2:00 p.m. Annual Meeting
Dirk Kershner, Board Chair
- 2:15 p.m. Cutting of the ribbon &
Elevator Dedication
Governor Paul LePage and Founders
- 2:30 p.m. Tours, coffee and treats

Mid-Maine Homeless Shelter 2013 Annual Report



*The season of homelessness does
not discriminate...*

19 Colby Street
Waterville, Maine 04901
(Ph) 207-872-8082 (Fax) 207-872-0834
shelter@ShelterMe.org
www.ShelterMe.org

Letter from the Board President

The blessings were all mine this past year as I served as Chair of the Mid-Maine Homeless Board. This honor has brought me many opportunities to serve and grow in working toward the mission of the shelter in ending homelessness.

I am fortunate to have worked with a high quality, caring, seasoned and junior board members. They all serve endlessly and work passionately utilizing their experience and skills to establish, chair and work on committees to build a solid foundation which will benefit the shelter for years to come. I am grateful for everything they have done, the time they have given, the financial support and backing to the shelter along with their tremendous knowledge and abilities that were provided to assist the needs of others.

As you are aware, no operation is successful without a leader to guide and direct all that needs to be done to drive the purpose and mission of that operation. As the Chair I have found that the shelter has that person in its Executive Director, Betty Palmer. She shows each and every day of the week a drive that is second to none. She works to assure that every guest receives services with dignity. She is a hardworking, passionate, caring and loyal leader that has achieved respect from an endless number of community members and organizations that have some kind of affiliation with the shelter. I am grateful to all of our generous donors; those who give monetarily; donate items of need, (food, clothes, diapers, toiletries, etc, etc, etc), and give the gift of their time by volunteering. Without these individuals, we would not be able to assist people who are homeless. For those who give money and donate items, we have worked hard to assure that all donations are used in ways that provide the most to those we serve. To volunteers who give their time, your work never goes, as you work to provide/assist in providing a safe, clean and homelike atmosphere for the neediest in our community. Your donations of money, gifts and time are appreciated more than you will ever know. Thank you all so very much!

As I enter into my second year as chair of the board, I continue to be committed to the work of the shelter to benefit those experiencing homelessness. I will continue to work with Board members, the Executive Director, and committees, as well as those in the community, at occupying the second floor, develop and implement long term policies and procedures that will allow the Shelter to fulfill its mission to end homelessness, on person, one child and one family at a time.

In closing I implore you to check out the Shelter and ask yourself, "what can I do to assist with this great mission?" Whether it is giving financially, giving the gift of time as a volunteer, or donating items of great need, you can help end homelessness and assist us in achieving our mission.

Best Regards,

Dirk Kershner - Board Chair

Annual Meeting April 6, 2014

Board of Directors 2014

Dirk Kershner, Chair	2015	Lisa Madore	2016
Susan Reisert, Vice Chair	2015	Traci MacDonald	2017
Jill Gilbert, Secretary	2016	Judy Williams	2017
Jessica Marin, Treasurer	2016	Margaret Smedberg	2017
Doug Cutchin	2015	Jonathan Rogers	Clerk
John Margolis	2017	Betty Palmer	Executive Director
Sandy Myers	2017	Danny Karter	Commemorative
Mark Tanner	2016	Sister Mae Doucette	Commemorative

MMHS has completed our 24th year of service to homeless individuals, families, and communities.



A special thanks to children at the shelter for participating in creating drawings for use in publications for the MMHS.

Committee Reports

2nd FLOOR COMMITTEE

2013 was once again a visioning year. We gathered with guests, staff and a wonderful ad-hoc committee of community leaders to explore the greatest needs in the community and the best use of our expanded space.

The 2nd floor of the MMHS has approximately 7000 square feet of space to be used for homeless services. We will use 2000 square feet for office and storage. This leaves 5,000 square feet to be used for new or existing programs that further our mission of ending homelessness.

Some of the ideas being discussed are the following:

- Congregate housing rental/affordable housing units
- Employment training program
- Educational training and conference room with computer access for apartment and employment searches
- Thrift store
- Youth Homelessness Program
- Healthcare
- 24 hour childcare center for working parents
- Partner agencies office space

This committee worked together to become informed and have learned what the top issues for our state are in regards to the fight to end homelessness. These areas are:

- ◆ Affordable Housing
- ◆ Transportation
- ◆ Childcare
- ◆ Employment with livable wage

This committee has now been assigned the task of talking to 10 or more people about what they feel the greatest need is in the community. They will bring this data back and the “think tank” of ideas to the board to make the final determination of the best use of the space.

Board of Directors 2013

Dirk Kershner, Chair	2015	John Margolis	2017
Jessica Marin, Treasurer	2016	Danny Karter	2015
Arlene Tully, Secretary	2014	Sandy Myers	2017
Doug Cutchin	2015	Amy Pryztulski	2014
Jill Gilbert	2016	Mark Tanner	2016
Kevin Joseph	2016	Lisa Madore	2016
Susan Reisert	2015	Traci MacDonald	2017
Karl Foss	2014	Betty Palmer	Exec. Director
Jonathan Rogers	clerk	Sister Mae Doucette	Commemorative

Thank you note from the Chair

I would like to take this opportunity to say a huge “Thank You” to members of the board that have served tirelessly for many years who will be leaving. Those members include Kevin Joseph, Karl Foss, Pastor Arlene Tully, Michael Roy and Amy Przytulski. Danny Karter will maintain a position as Commemorative member of the Board. Each of these individuals have given extensively to the board and provided an endless amounts of time, experience, knowledge and energy to building and establishing the Homeless Shelter that exists today. Without their hard work and dedication over the past several years, the dream and reality of the beautiful building that today houses the homeless in the greater Waterville area would not be a reality.

I commend each of them for all they have done and appreciate the opportunity to have worked with them in the short amount of time I have been involved with the board. They have truly been a blessing for individuals in need and throughout the community at large. Even though they will be leaving the Board, we know they will each continue working in some capacity to assist the homeless shelter in its mission. Kevin, Karl, Arlene, Amy, Michael and Danny, thank you all for your dedication, endless giving and incredible passion over numerous years of service for the betterment of those in need.

Sincerely,

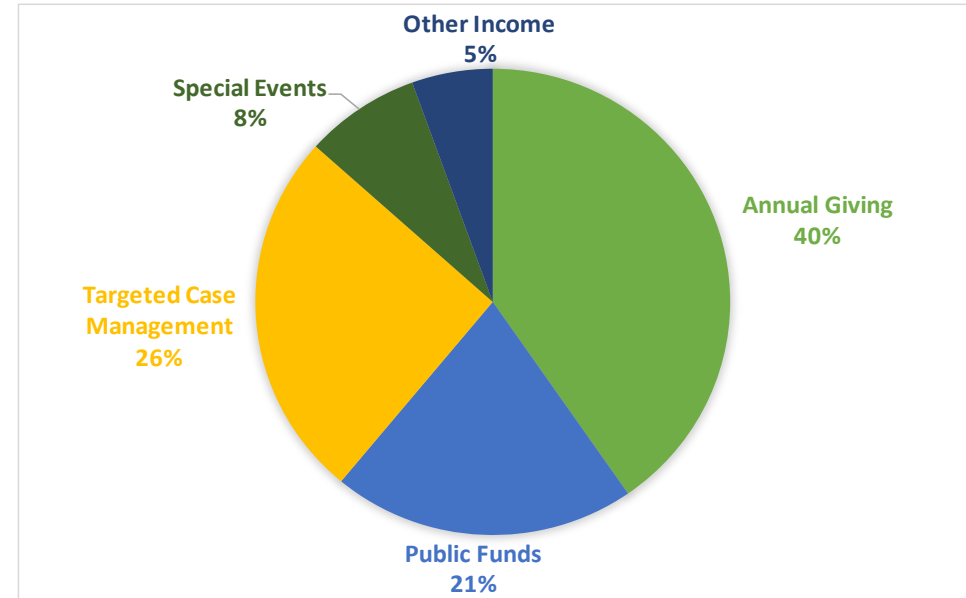
Dirk Kershner

Standing Committees 2013

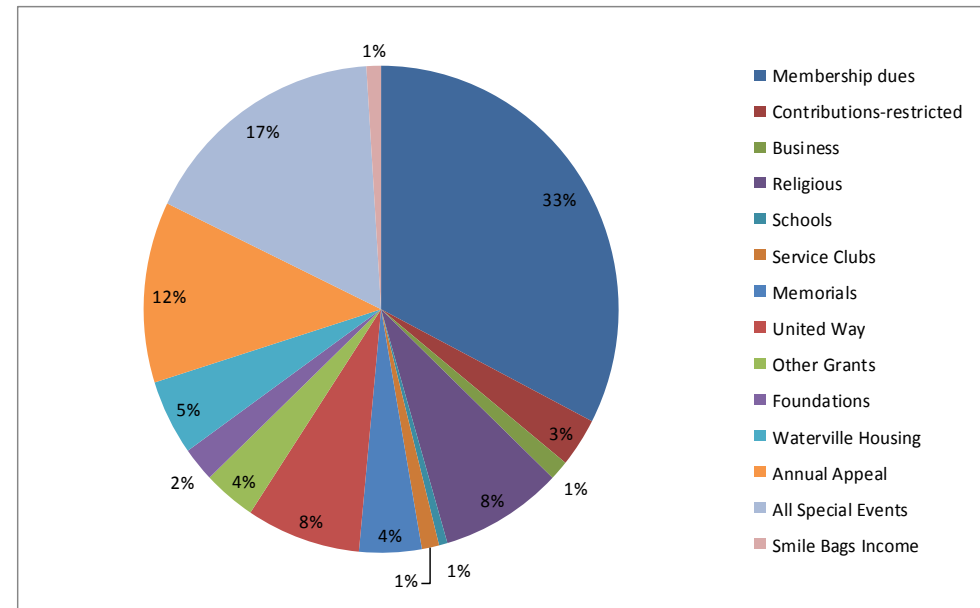
1. **Development Committee**—involved with grants, estate planning, annual appeal and donor relations.
Members: Suan Reisert, Jessica Marin, Betty Palmer, Dirk Kershner
2. **Finance Committee**—develops and oversees budget.
Members: Jessica Marin, Karl Foss, Jill Gilbert, Doug Cutchin, David Grenier, Dirk Kershner, Betty Palmer
3. **Management Committee**—develops and oversees employee policies both legally and ethically.
Members: Sandy Myers, Arlene Tully, Doug Cutchin, Dirk Kershner, Betty Palmer, Lisa Madore, Traci MacDonald
4. **Events and Communications**—organizes and oversees fundraisers.
Members: Kelly Rancourt, Betty Palmer, Jill Gilbert, Rita Corson, Jennifer Curry, Meghan Curtis, Judy Gray, Tina Hintz, Kerri Oliver, Rena Cater, Sheila Bacon, Arlene Toulouse, Sandy Myers, Cori Prisco, Clara Watson, Heather Bayley, Sharon Harding
5. **Governance Committee**—oversees nomination process for potential new Board members; reviews bylaws annually; reviews mission and vision; oversees strategic and new program planning.
Members: Kevin Joseph, Susan Reisert, Mark Tanner, Dirk Kershner, Betty Palmer, Jonathan Rogers, John Margolis
6. **Endowment Committee**—develops and oversees endowment policy and use of endowment funds; oversees management of the endowment.
Members: Susan Reisert, Mark Tanner
7. **Executive Committee**—
Members: Jessica Marin, Betty Palmer, Kevin Joseph, Arlene Tully, Dirk Kershner, Susan Reisert,

Finance Report

INCOME SOURCES



DONATION SOURCES



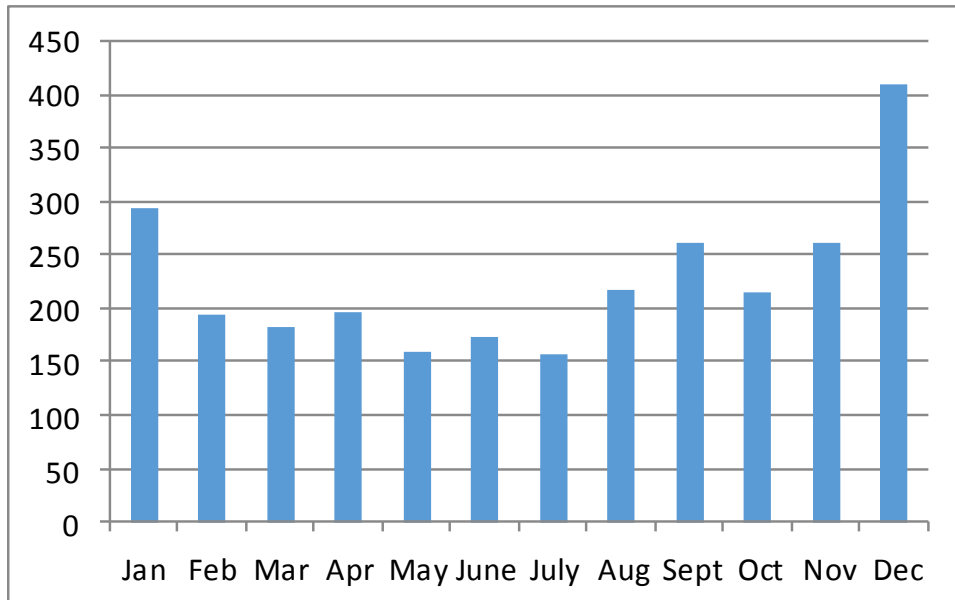
FINANCE COMMITTEE

The finance committee has the responsibility of keeping Mid-Maine Homeless Shelter financially viable through efficient fiscal operations and sound long-term investments.

In 2013 the Finance Committee continued to establish the financial transition and budgetary changes that incurred in the large move to the new shelter. The committee continued oversight of the operating budget and managed collections of the Capital Campaign funds. The committee worked on the implementation of new accounts and updated the financial policies and procedures. The Finance Committee continues to ensure that Mid-Maine Homeless Shelter is a good investment for the community's thoughtful charitable contributions.

Respectfully submitted,
Jessica Marin, Treasurer

NEW DONORS BY MONTH



To the staff at MMHS,
I want to tell you all how grateful I am to you for making it possible for me to have this wonderful place to live. I now have comfortable, affordable housing and am doing quite well.

Betty, thank you for keeping us safe and living in a clean environment. I know it can't be easy to have to make decisions that aren't always popular, but that are necessary.

Thank you, Debbie for bringing your husband in to play guitar and sing with us.

Thanks to the all-night staff who were patient and kind even though they were tired.

Big thanks to you, Angie, for being the best housing caseworker ever. You made housing possible for me.

Thanks to all the wonderful staff that took time to talk and listen to me.

Thanks to the great Colby volunteers
P.S. Thanks to Doreen for making me laugh. Lots of love and gratitude

Letter from the Executive Director

Dear Friends,

It is with great pride that I share with you Mid-Maine Homeless Shelters Annual report to the community and members. 2013 was a great year for MMHS. Our dedicated board, staff and volunteers have done an incredible job at expanding our outreach while strengthening our programs and services.

This has been an important year for MMHS. After having successfully weathered financial storms of the past several years, we ended the year once again financially strong.

We were blessed to welcome a new chairman, Dirk Kershner. He follows a long line of chairs, each of whom has made a unique contribution to advancing the goals of the organization and strengthening its voice for the homeless in the community.

I would like to thank Dirk and the MMHS board for this years outstanding leadership. 2013 was a difficult year for many local non-profit organizations, the effects of the economic downturn continued to be reverberated across the homeless service organizations statewide. We were fortunate that Dirk had a clear vision for MMHS that included the responsibilities and obligations of developing a larger diverse board to provide support and leadership to this growing organization. He has innovative ideas for his second year to continue the growth of the MMHS vision and mission to end homelessness.

Our ongoing goal is to keep overhead low while increasing our service in the field, and you, the community, truly make this possible! Mid-Maine Homeless Shelter is stronger than ever due to the continually expanding community members who come together to donate time, resources, and talent in support of our mission to provide shelter and services to homeless and displaced persons.

Thank you for wholeheartedly being a part of the MMHS ending homeless movement. We are looking forward to much more in 2014!

Cordially,
Betty Palmer
Executive Director

Committee Reports

DEVELOPMENT COMMITTEE

The Development Committee worked on a variety of issues:

1. The Annual Appeal - Our goal was to have a more effective annual appeal letter that went out before Thanksgiving. We also wanted the Annual Appeal letters to be personalized, with notes from Board members. We worked on a variety of formats, finally deciding on a format that included statistics, photos, and a message from the chair of the committee, along with categories of giving. The Annual Appeal was very effective and well-received.
2. Anniversary Event - We celebrated our first anniversary in the new building. Jessica organized pieces for an anniversary quilt, with squares available for guests and visitors to sign and decorate. We held tours of the Shelter during the day and dedicated the playground in the afternoon. Betty Palmer and shelter staff provided informational flyers, detailing how each room was used during the year.
3. Elevator - We received an anonymous matching grant to fund the elevator. We worked on getting the word out regarding this opportunity well in advance of the Annual Appeal.
4. Foundation Research - We began the process of looking at private foundations that may be good places for us to seek funds and assistance.
5. End of Capital Campaign - we brought the capital campaign to a formal close, encouraging the tidying up of outstanding pledges and asks. We had a brief ceremony in the fall at one of our Board meetings.
6. Current and Future tasks: We will work on: a) building better donor relationships, b) making plans for a Donor Wall for those who give generously to the Shelter, c) and finding some new members for the Development Committee.

Respectfully submitted,
Susan Reisert, Chair

Committee Reports

GOVERNANCE COMMITTEE

The Governance Committee, newly formed in mid-2013, has been very busy. We are in the process of reviewing all the standing committees of the shelter to define their responsibilities and powers. We are also reviewing roles of the board and their officers.

After meeting and identifying critical areas of expertise needed on our board, I am glad to report that we have added somebody from the insurance field and will be meeting shortly with somebody from the real estate field.. Our focus in the future will be to add people from childcare, dental, and psychology professions in order to offer increased diversity among board members and committees.

We are looking forward to an exciting 2014 year and trying to end homelessness in Central Maine, one child, one person, one family at a time.

Kevin P. Joseph

Governance Committee Chair

MANAGEMENT COMMITTEE

It is my pleasure to serve with all of you; here is the annual report for the Management Committee.

The Management Committee began meeting consistently in June 2013. With the assistance of Cathy Kershner, HR consultant to the committee, we were able to work on the following:

- Revised existing, updated and wrote new job descriptions that reflect the growth of the new shelter. Input was given by the staff in the writing of these descriptions. They were reviewed and signed by the staff members and new employees.
- Revised organizational chart.
- Policies and procedures of the shelter.
- Wage Scales and benefits, vacation time, time off, health insurance, compensation package development, because employees have not had a wage adjustment or increase in the past three years.

A special thank you to all the members of the management committee, past, present and consultative, who work diligently to fulfill the mission, purpose, and core values of the shelter by volunteering and working with commitment, passion and compassion on the projects of this committee.

Respectfully and gratefully submitted,

Sandy Myers,

Management Committee Chairman

Just a few of the many ways that YOU,
the community supported us in 2013



Mid-Maine Homeless Shelter Staff



Betty Palmer
Executive Dir.



Lynn Hendsbee
Assistant Dir.



Tanya Fossett
Exec. Assistant



Sheila Bacon
Shelter Coord.



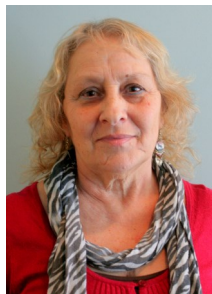
Angela Avery
Case Manager



Sally Chambers
Case Manager



Jennifer Ponder
Case Manager



Marylyn Sinclair
Case Manager

Staff Meetings and Trainings

2013 was a great year for the staff of the MMHS. The staff participated in many trainings that help each of them to grow in their very important roles at the shelter. Staff meetings at the MMHS are held two times a month. During the past year staff participated in the following trainings:

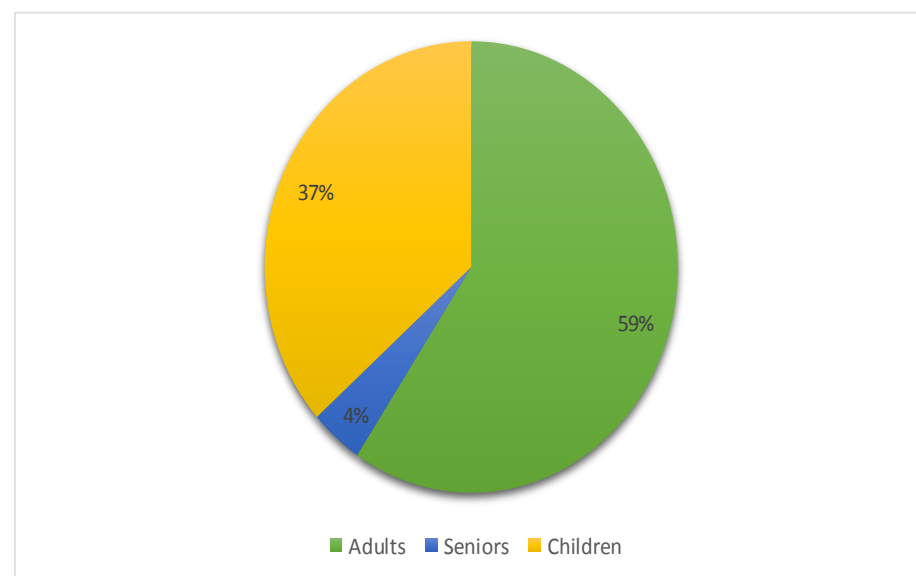
- ◆ Miles Brooks from Kennebec Behavioral Health presented how medications interact with one another.
- ◆ Jane Harper, Prevention Educator from ME General presented on their program “Sex and Drugs Jeopardy.”
- ◆ Fire Extinguisher training was presented by John Carroll from ME General Medical Center.
- ◆ Laura Holweger presented Diabetes Prevention program at ME General Medical Center.
- ◆ Madeleine Martin, SNAP-Ed Educator, presented SNAP-Ed program (using your food stamps wisely) to staff.

Homeless Prevention Food Pantry

The emergency food pantry at the Mid-Maine Homeless Shelter is open on Fridays from 1pm - 3pm. In 2013, we provided emergency services to 482 families, which included 739 adults and 426 children. People utilizing the pantry came from Waterville, Winslow, North Vassalboro, Oakland, Augusta, Benton, Fairfield, Clinton, Norridgewock and Canaan.

The food pantry is operated by community support and volunteer services. We are very appreciative of the many food drives organized by schools, organizations, businesses, and groups of friends, as well as individuals, who drop off donations of groceries. Without the support of these community groups and individuals, we would not be able to meet the demands of the food pantry.

In 2013 the food pantry at the Mid-Maine Homeless Shelter served 482 families in our communities! Of those 482 families they were comprised of the following individuals:



Lunder Homeless Prevention Report

Homeless prevention is a growing program for the shelter. Until recently, our main goal was to provide food and personal care items to supplement a person's budget so that they could pay the rent or purchase medicines, and we would provide the food they needed at the food bank.

Today the homeless prevention program meets with many people with a variety of needs, some needing only a portion of a security deposit, some needing a small amount of cash to pay rent and stay stably housed, some needing medicine until they could qualify for MaineCare and others needing furniture as to not sleep on the floor. Many times, it is to connect or refer persons and families to appropriate services in the community. So many times, a minor change can make a major difference.

Clients are encouraged to attend resume workshops. Financial sense support is provided. Most of all, we take a holistic approach to what is going on in 7 areas of a persons life; medical, education, housing, mental illness, employment, substance use and/or abuse and social /entertainment. Together, we set goals and help people get back on track without being homeless and stabilize families and individuals with the correct level of support and financial assistance when necessary.

Last year we received requests from over 300 people who were either homeless or in imminent danger of becoming homeless. Of those 300, we interviewed over 140/and assisted over 30 families without housing and only 5 needed to come into the emergency shelter. Many others were able to be stabilized without losing their housing, which is a much more affordable and healthier way to create change than everyone needing emergency shelter. Some just needed basic food, clothing, medication or other resources so they could use what money they had to pay rent and utilities. The cost of stabilizing each family was under \$1,000. This program is about helping individuals and families build skills to obtain and maintain stable housing. Our programs are intended to be used as tools to empower singles and/or families to obtain and maintain stable housing and to move forward.

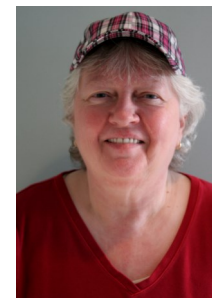
Mid-Maine Homeless Shelter Staff



Kady Este
Finance Controller



Heather MacKenzie
Housing Specialist



Natalie Labbe



Lee Davis
Night Attendant



Andre Chase
Night Attendant



Brian Wheeler
Night Attendant



Thomas Williams
Night Attendant

Missing from photos:
Yedda Smith,
Case Manager
and
Nathan Cobb,
Night Attendant

Internships

During 2013, MMHS was fortunate to have two interns join us for a semester. Heather MacKenzie, from University of Maine at Augusta, completed her internship during the spring of 2013. Heather received her Bachelor's degree in Mental Health and Human Services. While at the shelter, she developed a housing resource list for case managers and guests, as well as established a more efficient system of documentation.

Patrick McElvaine, a student of University of Maine at Augusta, completed his internship during the summer of 2013. Patrick earned an Associate's degree in Mental Health and Human Services. During his time at the shelter, Patrick was able to put together several resources for guests and volunteers.

Interns and practicum students are a vital part of our program, and we appreciate being able to provide this opportunity.

Our volunteers truly make the difference!

2013 was another busy year, as reflected by over **11,158 hours** of time that volunteers gave! Volunteers include local citizens, area churches, business groups, former guests who wanted to give back to the shelter, college students, high school groups, and more.

Monthly volunteer orientation sessions resulted in **175 new volunteers** joining the hundreds of veteran volunteers who provided support/assistance throughout the year.

Volunteers.....

- Prepared and served meals
- Answered phones
- Taught classes including, but not limited to....
 - Drawing
 - Sewing
 - Knitting
 - Cooking classes for adults and/or children
- Organized monthly birthday parties for children
- Transported guests to obtain job applications or to interviews
- Assisted various guests in preparing tax returns
- Provided child care when parents attended classes or went to appointments
- Provided day shelter coverage
- Cleaned the shelter
- Washed, dried and folded laundry
- Delivered furniture and supplies to guests when they transitioned to their apartments
- Picked up furniture
- Maintained the clothes closet
- Ran the emergency food pantry
- Sorted donations
- Helped to organize and run the three indoor yard sales and the first annual Scrapfest

We are very fortunate to have these incredible volunteers and could not function without them!

Shelter Programs

Baking Classes:

Baking classes are offered for guests to learn new skills, and it is a great way for volunteers to interact with and support our guests.

Meditation/Spiritual life/Bible Study:

Guests are able to learn how to use meditation to benefit all areas of their lives. Bible study is held weekly for guests.



Parenting Classes:

Parenting classes provide education and support to guests and caregivers. These classes are an important and crucial resource to each of them.

Double Trouble:

Double Trouble is a recovery group for people with dual diagnosis, held weekly and run by staff of KBH.



Sketching Class:

A volunteer offers sketching classes for older children and adults.

Financial Workshops:

In partnership with KVCAP, Money Matters class is held weekly at the shelter. This 4-week series focuses on learning to make a budget, understanding how to manage a bank account, increasing one's credit score and using loans and credit wisely.

EDUCARE:

In partnership with KVCAP and Educare, guests of our shelter attend playgroup at Educare twice a week.



It would be impossible to list all of our collaborating partners and agencies without leaving someone out. We are thankful that we are part of a community that is willing and able to share their talents and resources with the guests of the Mid-Maine Homeless Shelter. Without their support, we would NOT be able to help our guest in all areas of their lives!

Shelter Programs

The MMHS works closely and collaboratively with agencies and facilities that provide services to homeless individuals in our community. Guests are provided additional support while at the shelter by utilizing trained community volunteers and resource specialist services to refer and link them with appropriate services and benefits. Collaborative partnerships include Waterville Adult Education, Waterville Public Library, Moco Social Club, KBH High Hopes Program, Health Reach and Maine General's Intensive Out Patient Program, Discovery House, local AA and NA groups and other community supports.

Drug Overdose Prevention Training:

Jayne Harper MS, Drug Overdose Prevention Educator from Maine General Medical Center comes to the shelter once a month to do a workshop with the guests to educate them about dangers of prescription and non-prescription drug use.

AA Meetings:

Alcoholics Anonymous is held Monday through Friday for our community members and guests of the shelter. This meeting is facilitated by local AA leaders.



Employment Workshop:

The Adult Education program in Waterville has provided a staff member to come to the shelter on a weekly basis. Guests develop a resume and get support with job search.

SNAP-ED:

The Supplemental Nutrition Assistance Program Education (SNAP-Ed) is nutrition and physical activity education for people who are eligible for SNAP benefits (previously known as food stamps).



Sewing and Knitting Classes:

Guests have the opportunity to participate in sewing and knitting classes taught by volunteers.

Veteran's Support Program:

Guests' who are veterans are linked to veteran agencies such as Veteran's Inc., ESM/Veteran Specialist and Togus VA services.

Volunteer Spotlight

Are you part of the 100 Hour Club?

These volunteers donated over 100 hours of their time to MMHS during 2013! Thank you all for your time! You are TRULY invaluable!

Perry Ayotte	John Bacon	Laurie Barboza
Germaine Bell	Kathy Bureau	Regina Derby
Carolyn Draheim	Ted Dunn	Debbie Hicks
Dave Lemieux	Jody Lemieux	George Sadlo
Nancy Lemieux	Dave Mellott	Pat O'Keefe
Rich Notarbartolo	Jennifer Parks	Cathy Picher
Phyllis Pooler	Tricia Sherburne	Nancy Wilson
Esther Bernhardt	Alan Douin	Kelly Rancourt
Elizabeth Look	John Maddux	Michael Roy
Sandy Leclair	Tish Begin	Tora Frappier
ME State Credit Union	Colby Vol. Center	Przytulski Family

*Do your little bit of good where you are,
it's those little bits of good
put together that overwhelm the world.
~Desmond Tutu~*



2013 Annual Meeting and Volunteer Celebration
Honoring our volunteers

2013 REM Community Awards

In 2010, Jake Smith saw a need at his school, Messalonskee High School. There were some students who didn't seem to have some of 'the school things' that the rest of the kids had. He went to his guidance counselor and was told about the homeless children at Mid Maine Homeless Shelter. He enlisted his Nana, Nancy Wilson to work with him. Together they went to the Shelter and talked to the Executive Director, Betty Palmer, and asked how they could help. They came up with the idea of making and handing out "Smile Bags" to homeless children staying at Mid-Maine Homeless Shelter. They filled the bags with toiletries, pencils, notebooks, paper, cards, games, stuffed animals, mittens, and a soft cozy blanket, made by Jake and his Nana. Jake and Nancy created an information sheet to give a child's parents when they arrive at the shelter and then use this information when making the "Smile Bag" to personalize each one according to favorite color, etc. Jake and Nancy solicit items from local groups, business, other students, and purchase many themselves. To date, they have distributed over 283 Smile Bags.

This idea eventually led to giving needed articles to homeless students at Messalonskee High School and the neighboring schools.

Jacob and Nancy saw a need and found a way to help homeless kids in the local schools and community. They are an incredible family!



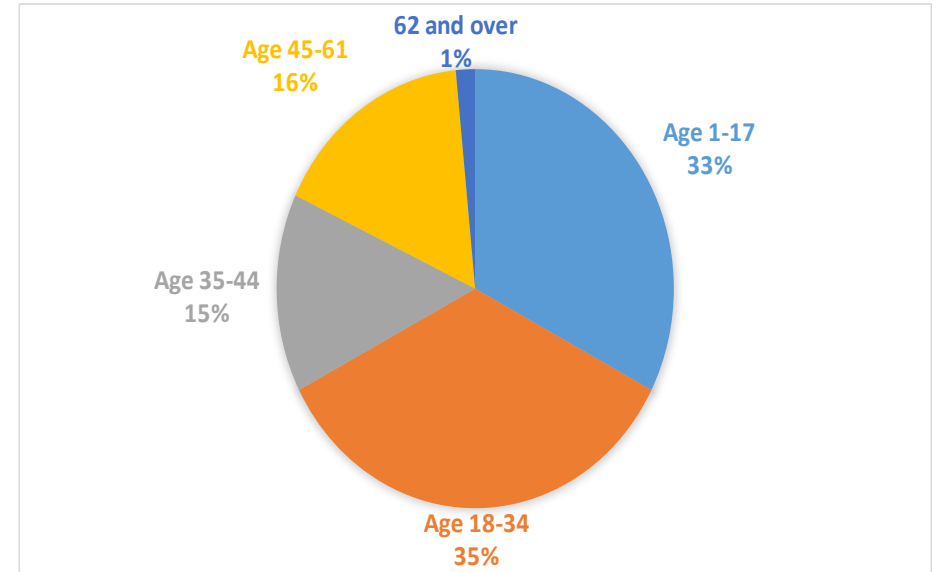
*REM Community Volunteer Award
Jacob Smith and Nancy Wilson*

*Micah Heroe Award Recipient
Kathy Bureau*

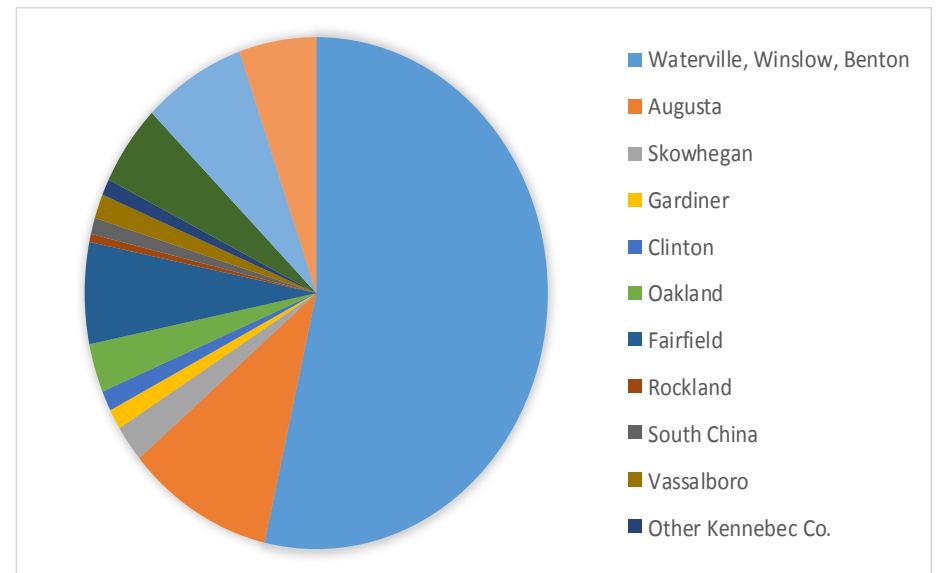


MMHS Program Highlights

Who are our guests?



Where are our guests from?



MMHS Program Highlights

Working with guests of the Mid-Maine Homeless Shelter is an extremely rewarding job. We offer opportunities to help guests rebuild their lives during especially difficult times.

Supporting people with a meal when they have not eaten in 24 hours; providing clothes when all they have is what is on their backs; speaking a word of encouragement when someone who is crying and feels overwhelming shame about being homeless we tell them that our shelter offers hope and a future if they choose. We are here to not only house the homeless, but, to partner with them to help each person and family to rebuild their life.

Last year, MaineHousing offered a new program for our guests called “Home to Stay.” This program offers a voucher that comes with housing assistance along with supportive case management services. Of the two vouchers associated with Home to Stay, one is a STEP, which helps employed guests become stabilized within one year (up to twelve months), and the other is a Housing Choice, which provides services for longer than one year.

Our first STEP voucher went to a young woman who was pregnant and working a part-time job. While seven months pregnant, she obtained a second job. She was single, and due to have a baby in less than two months. We recognized her drive and determination, and awarded her a STEP voucher. We also saw that this voucher would allow her to have a home to bring her newborn baby to, give her some time off to recover from childbirth, and provide case management and support once housed. Her baby is now six months old, and she has acquired a full-time job, making enough money so that in 3 months she will be working and paying full rent, and giving back to our community.

What a pleasure to watch people go from homelessness to being housed, confident and happy citizens of our community! The “housing first” model is a priority for Mid-Maine Homeless Shelter to end homelessness in central Maine and in our state.

Angie Avery, Home To Stay Navigator/Case Manager

Celebrating our 2013 Volunteers

On April 6th, 2014 we honored our 2013 volunteers at the Annual Meeting and Volunteer Celebration. At this year’s celebration we recognized the following groups or individuals for their dedication and service to the Mid-Maine Homeless Shelter and its guests:

Thomas College “RA’s”- Community Service Support Award

Huhtamaki - Awesome Business Support Award

Waterville HS “Panther Helpers” - Awesome Student Support Award

Living Waters Community Church - Faithful Spiritual Support Award

Lutheran Church of the Resurrection - Faithful Spiritual Support Award

Dave and Jody Lemieux - The World Class Movers Award

Vassalboro Jr. High - JMG (Job for Maine Graduates)

Awesome Student Support Award

Pierrette “Perry” Ayotte - Outstanding Office Volunteer Award

1st Annual KVO Micah Heroes Award

It was our pleasure to nominate our dedicated volunteer Kathy Bureau for the MICAH award. Kathy has been a volunteer at Mid-Maine Homeless Shelter for the past three years. During that time, she has donated approximately over 500 hours of onsite time to the mission and vision of the shelter. Though she has spent the majority of her hours at the Shelter working in the office her volunteerism goes far beyond our doors and into the community by participating in the End Hunger Walk and Homeless Awareness events.

Our office volunteers are an essential and necessary piece of daily operations of the Shelter. Kathy has always exhibited a caring, compassionate and friendly face to all those she comes in contact with. Whether it be toward a current guest, someone in need of services, another volunteer or a staff member, she consistently treats everyone with the same respect. One staff member has relayed that, “Kathy is always very friendly when answering the phone and taking messages.” Her Christian character shines through to those that have the privilege of interacting with her.

Kathy is dependable and takes her role of volunteer seriously. She can always be counted on to be there when she is expected to be. We also celebrate that Kathy has the gift of teaching, and she helps to train new office volunteers.

Kathy sets an example for all of our volunteers by walking humbly with God and showing mercy to our guests who are homeless.

Warming Up for Christmas

This years "Warming Up for Christmas" benefit was held as a concert at Waterville Opera House on December 8th, 2014. This benefit is put on by Steve and Linda Fotter, students, and friends. All proceeds from the show were given to the shelter to be used in every-day operations. This past years concert was once again a huge success, providing the shelter with over \$9,000. This brings the total raised by the Fotters to nearly \$50,000.



SCRAPFEST

The First Annual Scrapfest was held on Sept. 21, 2013 at the Blessed Hope Church in Waterville from 8:30am - 4pm. Over 60 participants enjoyed the day creating their stamping/scrapbooking projects, taking classes from the various nine vendors, and receiving door prizes donated by the vendors. The 50-50 Raffle and Chinese Auction were popular based on the tickets purchased. Participants extended compliments regarding the breakfast munchies and especially lunch prepared by two guests and served by a cook's two teenaged children. Combining the registration fees, the 50-50 Raffle, and Chinese Auction, a total of \$2,100 was raised. Based on the completed evaluations, participants and vendors want another fall Scrapfest, with requests for a spring event, as well. Many thanks to the numerous volunteers who helped, especially Kerri Oliver who helped coordinate the Scrapfest, and the Blessed Hope Church for the free use of the building!

MMHS Program Highlights

- ◆ A. is a **23 year old mother of 2 children** (ages 3 1/2 years and 10 months old) who came to the shelter for the 2nd time this year. She had been unable to keep up with her bills and unable to find an apartment. While at the shelter, she was linked to a variety of mental health services, including medication clinic, counseling for herself and children's case management for her son. She and her children regularly participated in the Educare playgroup. She also regularly attended the SNAP-Ed class, Money Matters classes, and the employment/resume workshop at the shelter. She received a BRAP voucher, and she and her children moved into their own apartment. She is now part of the Home to Stay Program and will be working with the shelter staff to remain stable in their new home.

.....stably housed for 10 months.

- ◆ N. is a **63 year old woman** who had lost her home when it was deemed uninhabitable. She also lost her MaineCare and Social Security. She has significant health issues and is reliant on an oxygen tank. She had been living in her car in Waterville prior to coming into the shelter. With shelter staff's assistance, she got re-instated on social security and MaineCare. She moved from the Shelter to her own apartment with a BRAP voucher and numerous supportive services.

.....stably housed for 9 months.

- ◆ C. is a **44 year old veteran** who came to the shelter with physical and mental health issues. He attended the resume/employment workshop, began working with vocational rehab, applied for a social security card, and applied for Waterville General Assistance, Section 8 housing, BRAP and Shelter Plus. He was awarded with a Shelter Plus voucher and found an apartment in the local area.

.....stably housed for 12 months.

MMHS Program Highlights

- ◆ A. is a **24 yr old pregnant mother of two** who came into the shelter with mental health issues. She actively attended parent education classes and regularly attended play group with her children at Educare. At the shelter, she attended the parent-to-parent groups, attended weekly resume/employment workshops and applied for jobs. She was referred for children's case management services and counseling at KBH. With staff assistance, she applied for all applicable housing vouchers. She recently used a Shelter Plus voucher to rent an apartment. She plans to continue attending MMHS programs.

.....stably housed for **11 months.**

- ◆ J. is a **36 year old man** who was a guest this past month at the shelter for the 4th time since 2005. He has numerous psychiatric diagnoses and physical issues including brain and nerve damage, knee problems and asthma. He came to the shelter highly motivated to establish stable housing. During his stay at the shelter he obtained a primary care physician, mental health services and stabilizing medication. He was a regular participant in the shelter's programs, including the 'Double Trouble' group and sewing classes. He paid off a previous housing debt and was able to obtain a BRAP voucher for an apartment.

.....stably housed for **10 months.**

- ◆ R. is a **67 year old man** who came to the shelter with significant health issues, including cardiac and respiratory issues and diabetes. He suffered from incontinence and needed to be on a respirator while sleeping. He was waiting for his divorce to be final so that he could stabilize his finances. The shelter worked to accommodate his health needs and supported him through a highly emotional time. The financial situation settled, and he was able to find an affordable apartment. The shelter helped him set up case management services for support, and is now on his own.

.....stably housed for **13 months.**

16th Annual MMHS Golf Tournament

The annual golf tournament is a major fundraiser for the Mid-Maine Homeless Shelter. This year was the 16th year of the tournament, thanks to the generosity of Steve and Paula Brown, owners of Clinton Golf Course. We raised \$13,600 in 2013 with the support of players, sponsors and donations. The money raised goes toward the operational fund at the Shelter.

Governor Paul LePage, a past member of the MMHS Board of Directors, conceived the idea of a golf tournament 16 years ago. He contacted Steve and Paula Brown regarding their private course, and they generously donated the course that first year and every year since. We owe a debt of gratitude to Steve and Paula Brown.

The all volunteer golf committee meets from early spring until the day of the tournament to solicit sponsors, players and donations in order to make this an expense free event for the Shelter.

We want to thank everyone who makes our golf tournament a success year after year!

Sincerely,
The Golf Committee
Jill Gilbert
Diane Poole
Nancy Carter
Allan Rancourt
Ken Quirion
David Holden
Jeanne LaPlante
Marie Cates



Yard Sales

Three yard sales were held in 2013. The first was held at the First Congregation Church on June 7 & 8. The next two sales were held at Pleasant Street Methodist Church on August 16 & 17 and Nov. 15 & 16. The three sales raised a total of \$4472. Over 350 volunteer hours went into the set up and running of these events. Thus, a huge note of appreciation to the volunteers and the two churches for their support.

Taste of Waterville



The MMHS sold cotton candy at the Taste event this year! It was a great success and would not have been made possible without our corporate sponsors. Many thanks to Huhtamaki and Edith & Mike's Concessions!

Walk to Stop Hunger

Maine State Credit Union's Walk to Stop Hunger was a major fundraiser for the Shelter this year. Those that walked in support of the Mid-Maine Homeless Shelter helped to raise over \$5,000 to help provide food for our shelter guests and our community food pantry.

Thank you to the Maine State Credit Union for this awesome event and to all those that walked in support of the MMHS!



Community Support

Marlene Myers "Merry Giggles" provided a night of fun for our families. Games, singing, jokes made for a great time!



The community once again blessed the shelter tremendously with their gifts and baked goods during the holiday season.

Waterville Mayor, Karen Heck, sponsored a wonderful New Years Eve party for our guests!



Community Support



Students in Mrs. Koch's 3rd grade class at Mt Merici Academy in Waterville created this beautiful painting as part of learning to give to others during the Christmas season. They then auctioned it off and all the proceeds went to the MMHS!

Students in classrooms all over central Maine see the need and find ways to support the shelter. This box of "love" came from students at Benton Elementary.



Businesses supported the shelter with their time, donations and monetary contributions. Key Bank employees spent a day of community service helping to clean the shelter!



Homeless Awareness

~Business to Business~

The MMHS participated in both the spring and fall Business to Business Showcase's sponsored by Mid-Maine Chamber of Commerce. These events are a great way to provide homeless awareness to our community, as well as gather support for our mission from area businesses.

~Festival of Trees at Good-Will Hinkley~

Dan O'Halloran and Doyal Alliance Group Inc. sponsored a tree for us at the Festival of Trees. Over 1,500 people viewed the trees this year. The theme of our tree was "No Place Like Home" and was decorated by volunteers. The tree came out beautiful and was great publicity for the shelter. This was our first year participating in the festival and we hope to make it a yearly tradition!



~TEDx Talk~

The TEDx Program is designed to help communities, organizations and individuals to spark conversation and connection through local TED-like experiences. At TEDx events, a screening of TED talks videos—or a combination of live presenters and videos—sparks deep conversation and connection at the local level. TEDx events are planned and coordinated independently.

Betty Palmer, Executive Director, was given the opportunity to present at a TEDx Talk event at Colby College. Her talk entitled, "No One Expects to Be Homeless" reached hundreds at Colby that day, it has now reaches thousands as it continues to be viewed online.

~Youth Homelessness Video~

Homeless Teens in Maine: Finding the Solutions

Mid-Maine Technical Center students Kyle Gravel and Myles Welsh created this documentary on the search for solutions to teen homelessness in Central Maine. This video was made in partnership with the MMHS, Home for Little Wanderers, KVCAP, United Way, REM, and AOS 92. The video can be viewed by visiting the following website: www.vimeo.com/57011261

Community Support



The community came together and help us outfit and provide supplies for all of our children going back to school in September. Donations of clothing, backpacks, sneakers and school supplies were donated by businesses, groups and many individuals.



Many young donors, such as Connor and Addison, collected items for the shelter and raised funds to support the shelter.



Waterville High School's girls basketball team chose the MMHS for their service project.

They collected donations at one of their games and also did a 50/50 Raffle.

Community Support



Girl Scout Troop #49 of Albion created a beautiful flower garden for us at the shelter. They also made first aid kits for our guests and provided cookies to share. They were just one of many troops that supported the shelter in the past year.

A wonderful sandbox was added to the playground this year. Sean, an Eagle Scout, spearheaded the project.



Jumpstart Our Youth – JOY – is a statewide youth philanthropy program that enables more than 3,000 Maine middle and high school students to make meaningful grants in their local communities. As part of their Jobs for Maine's Graduates (JMG) school curriculum, students study the roles of nonprofits and philanthropy through making grants to local organizations serving youth and families. An emphasis on community service and volunteering helps students understand how time and talent complement their "treasure". Grant funds are provided by collaborating foundation and corporate donors.

Founded by the Unity Foundation and co-funded by private and corporate donors, the students bring their own passion and creativity to the annual grant making process, shaping and improving the process each year.

The MMHS has benefited by these grants over the past several years.

